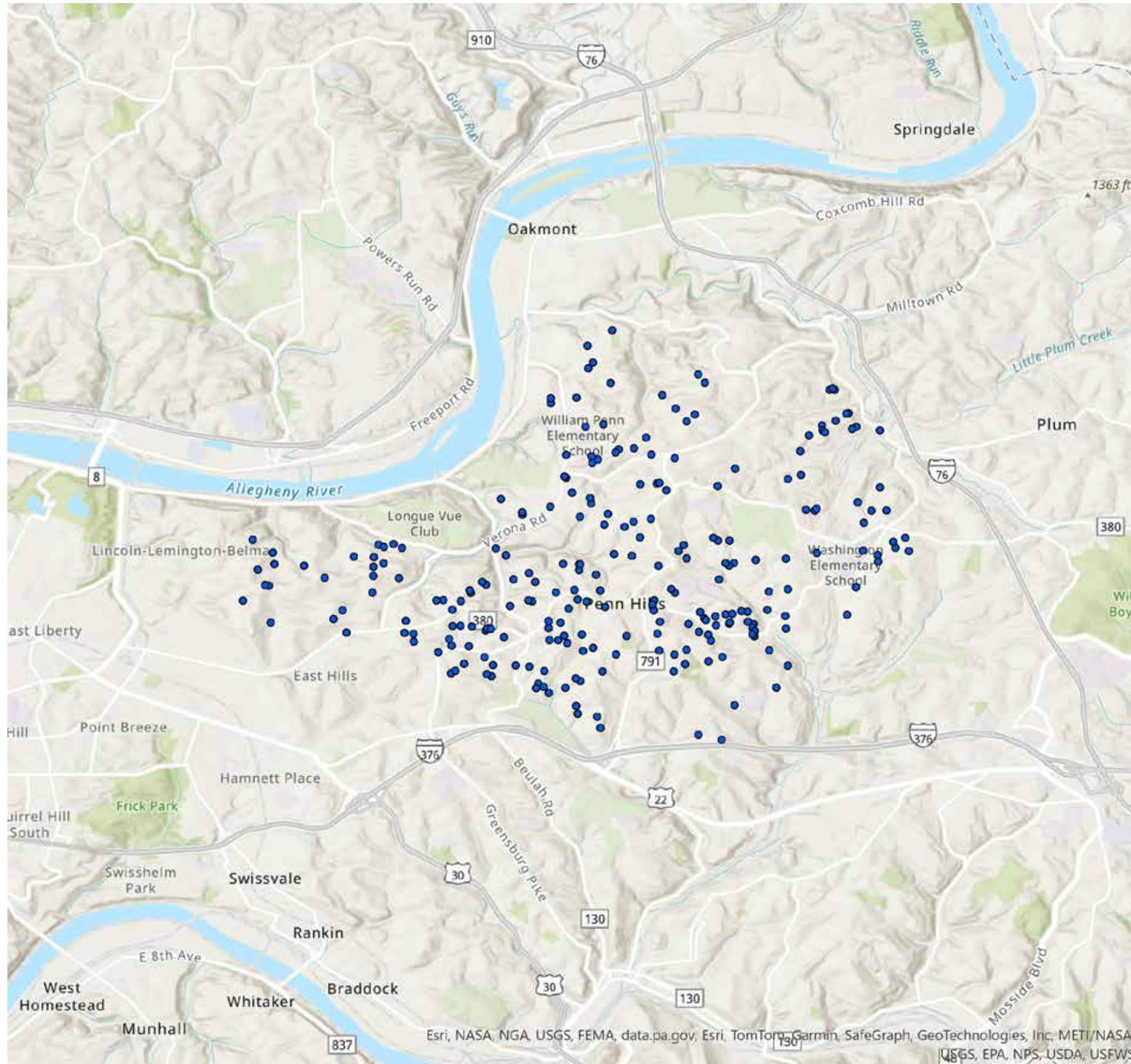
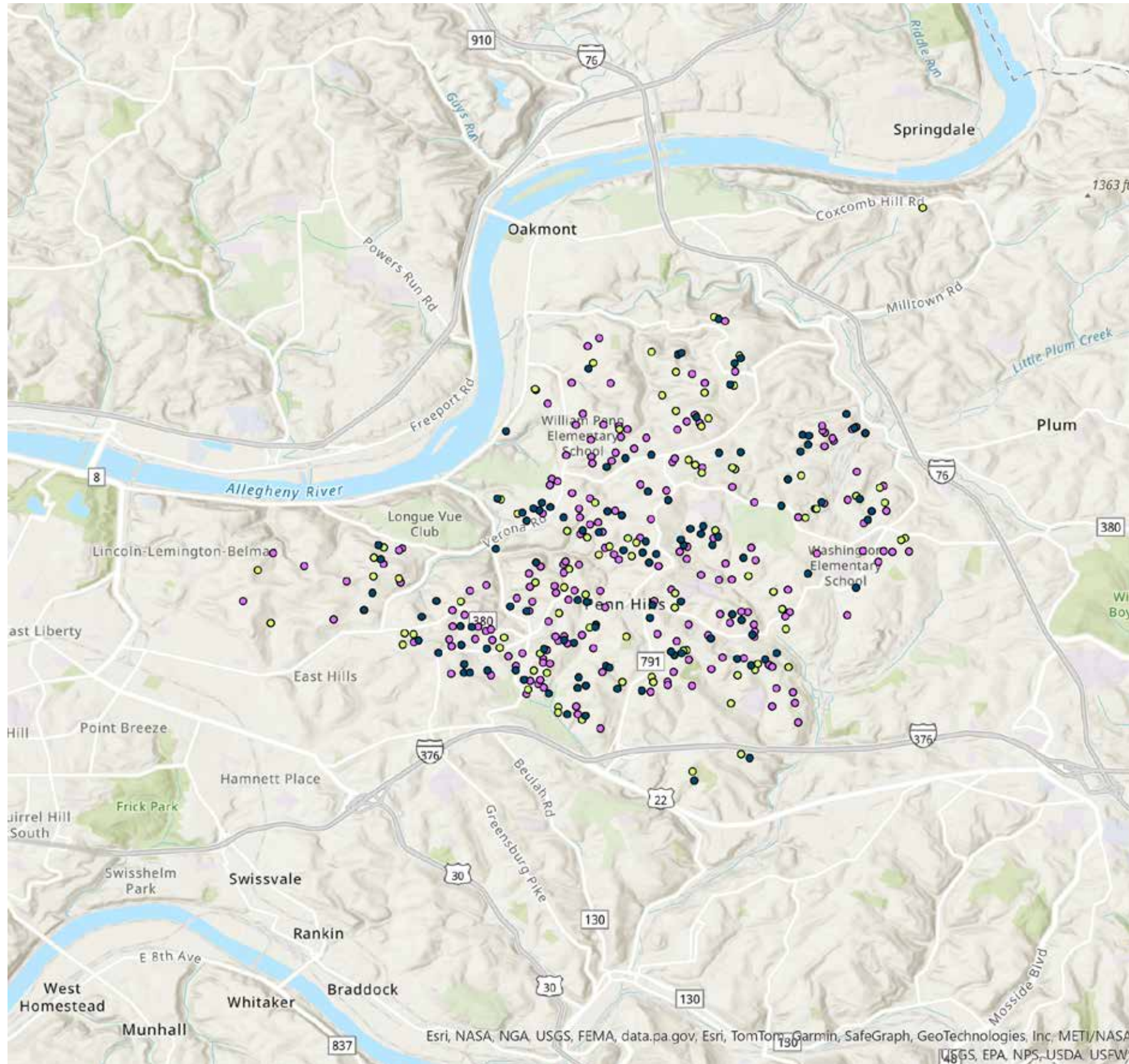





Area Physical Appearance (Fair/Poor)

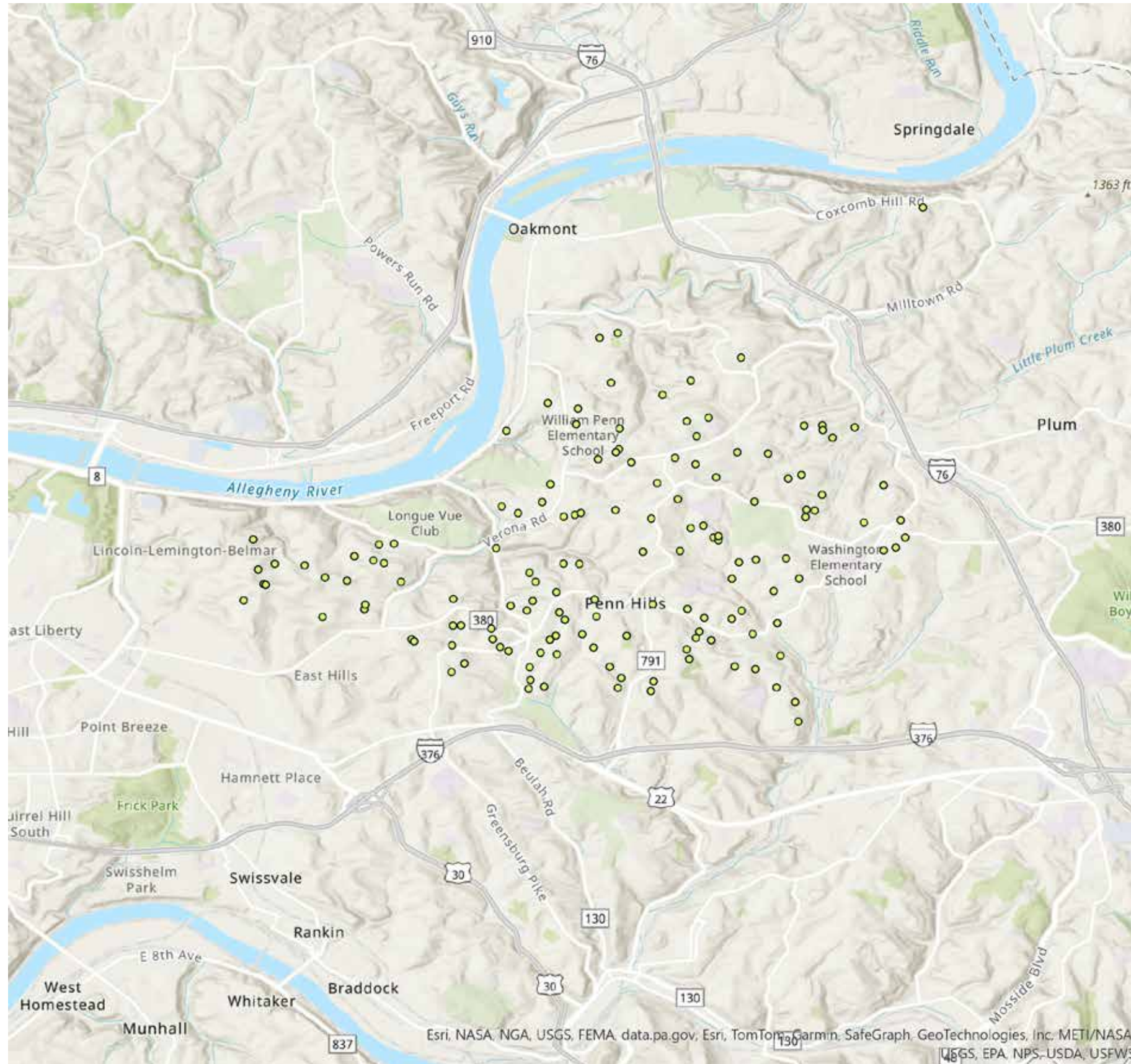


Socially Isolated Residents & Volunteers



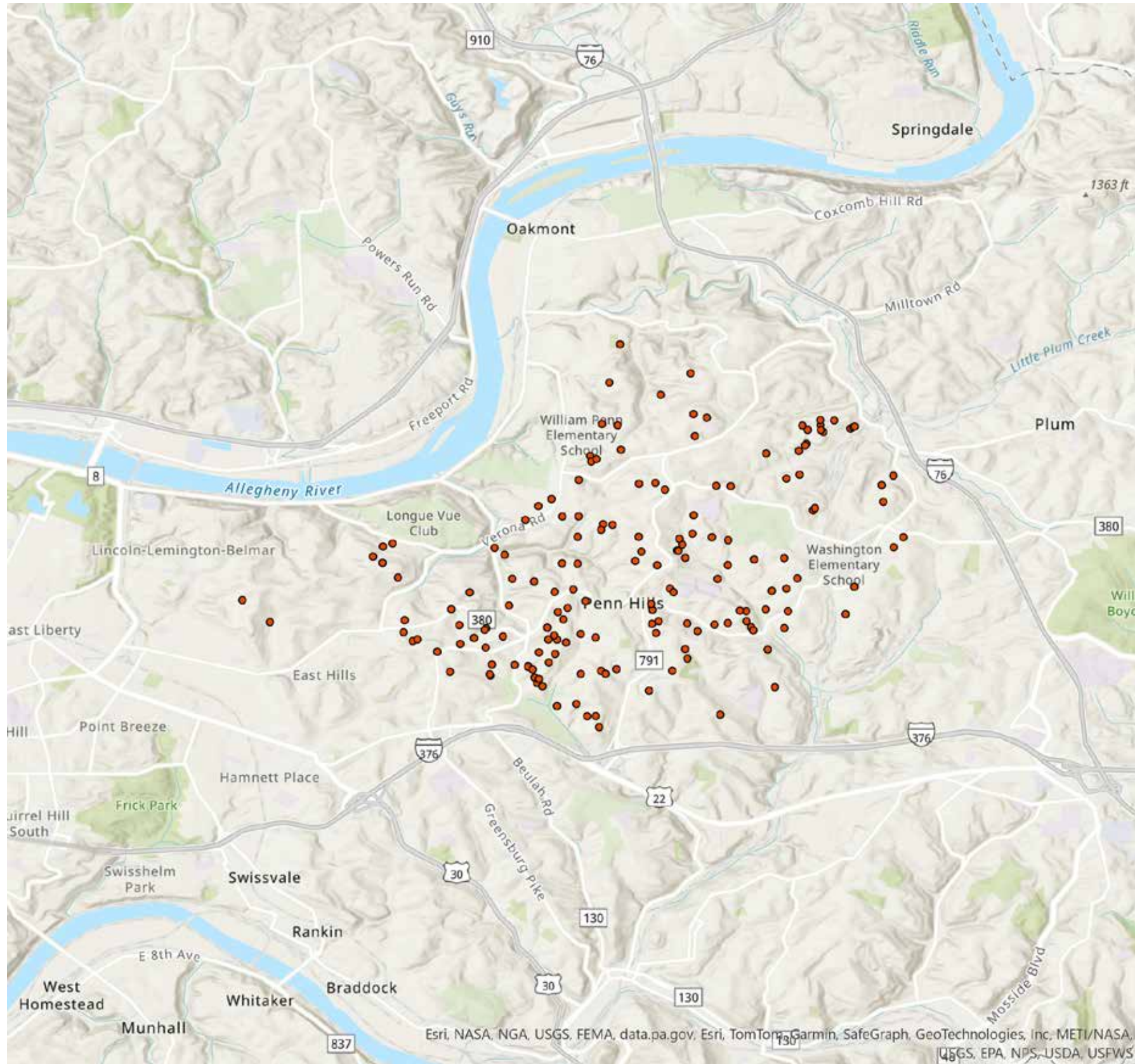
-  residents who expressed interest in general volunteering
-  residents who expressed interest in being a Senior Support volunteer
-  residents who expressed feeling socially isolated

Residents Who Don't Use Penn Hills Parks



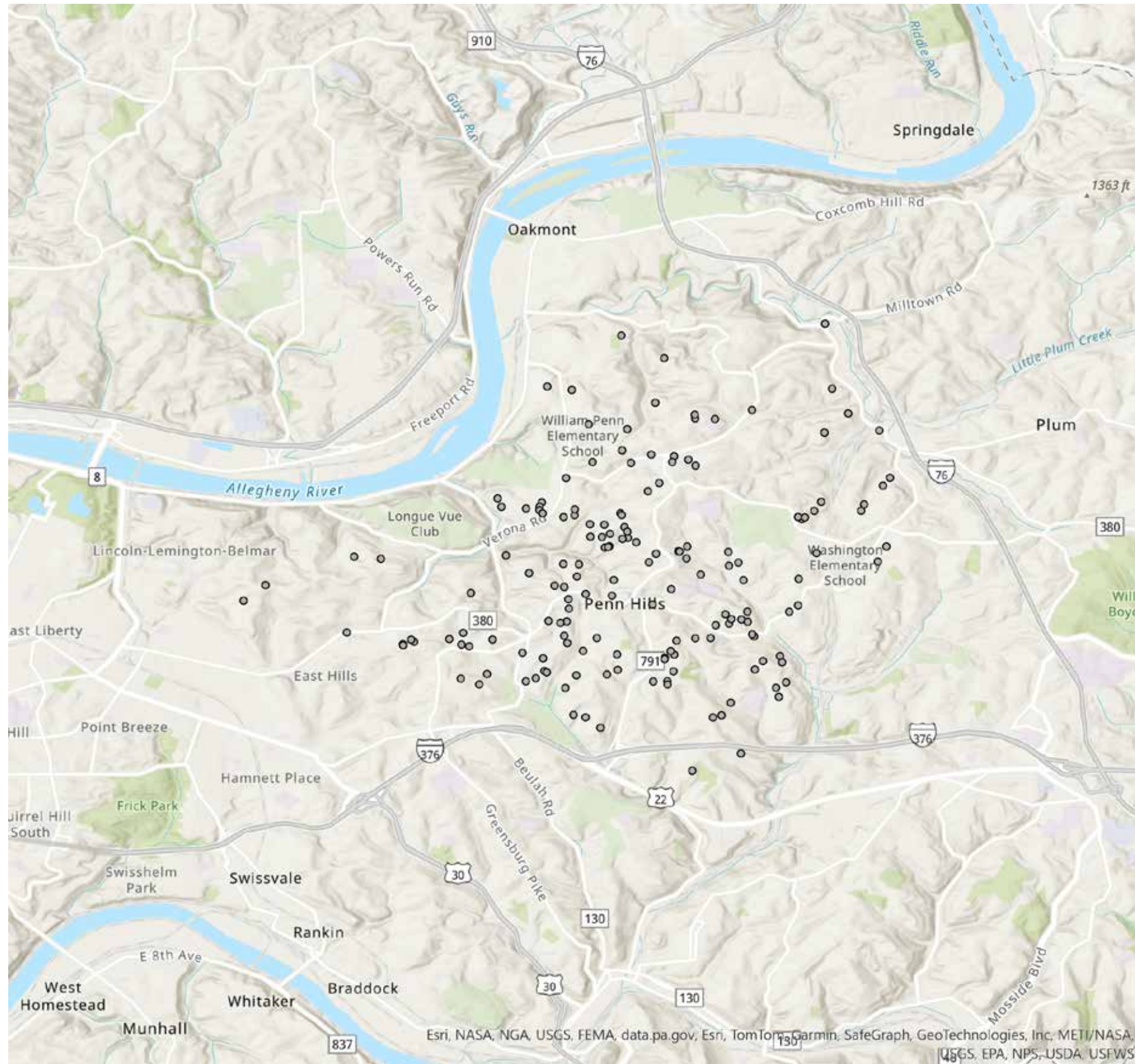
residents who do not use Penn Hills Parks due to distance / quality / safety / lack of information

Traffic Safety Concerns



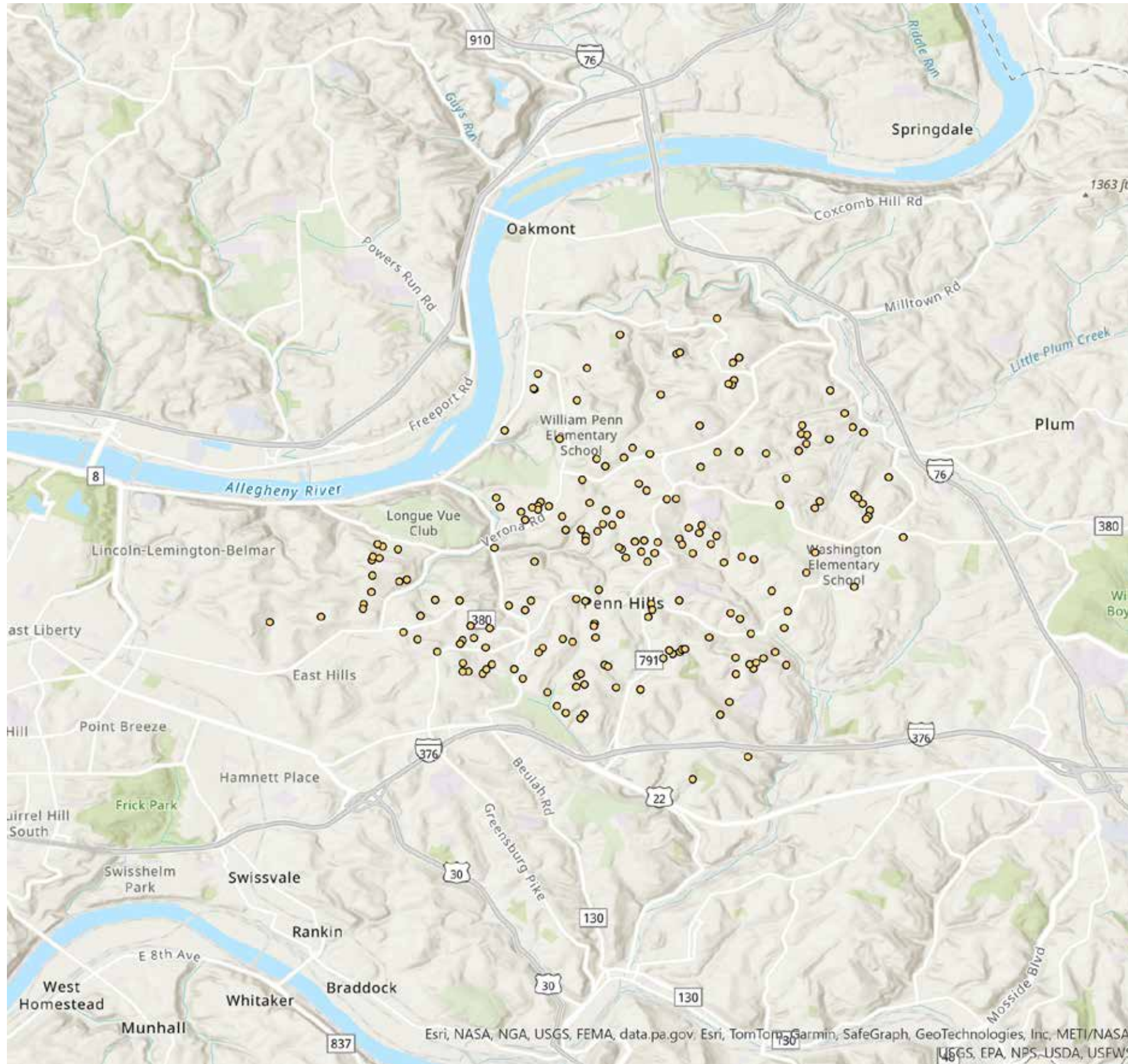
 residents who have safety concerns of speeding / traffic on their block


Safety Concerns



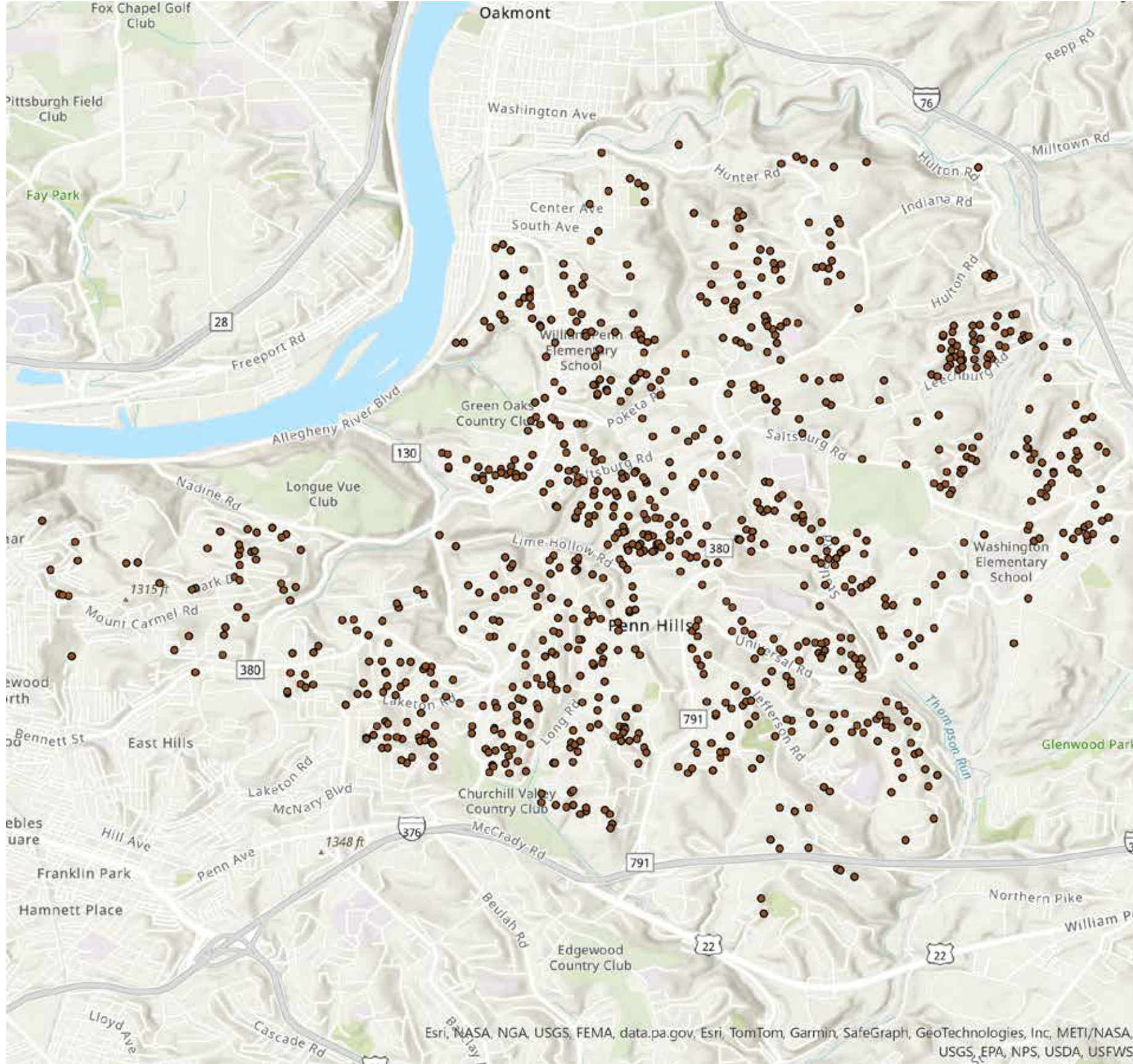
residents who do not feel safe / sometimes do not feel safe in the neighborhood

Volunteers: Civic Groups or Block Watch



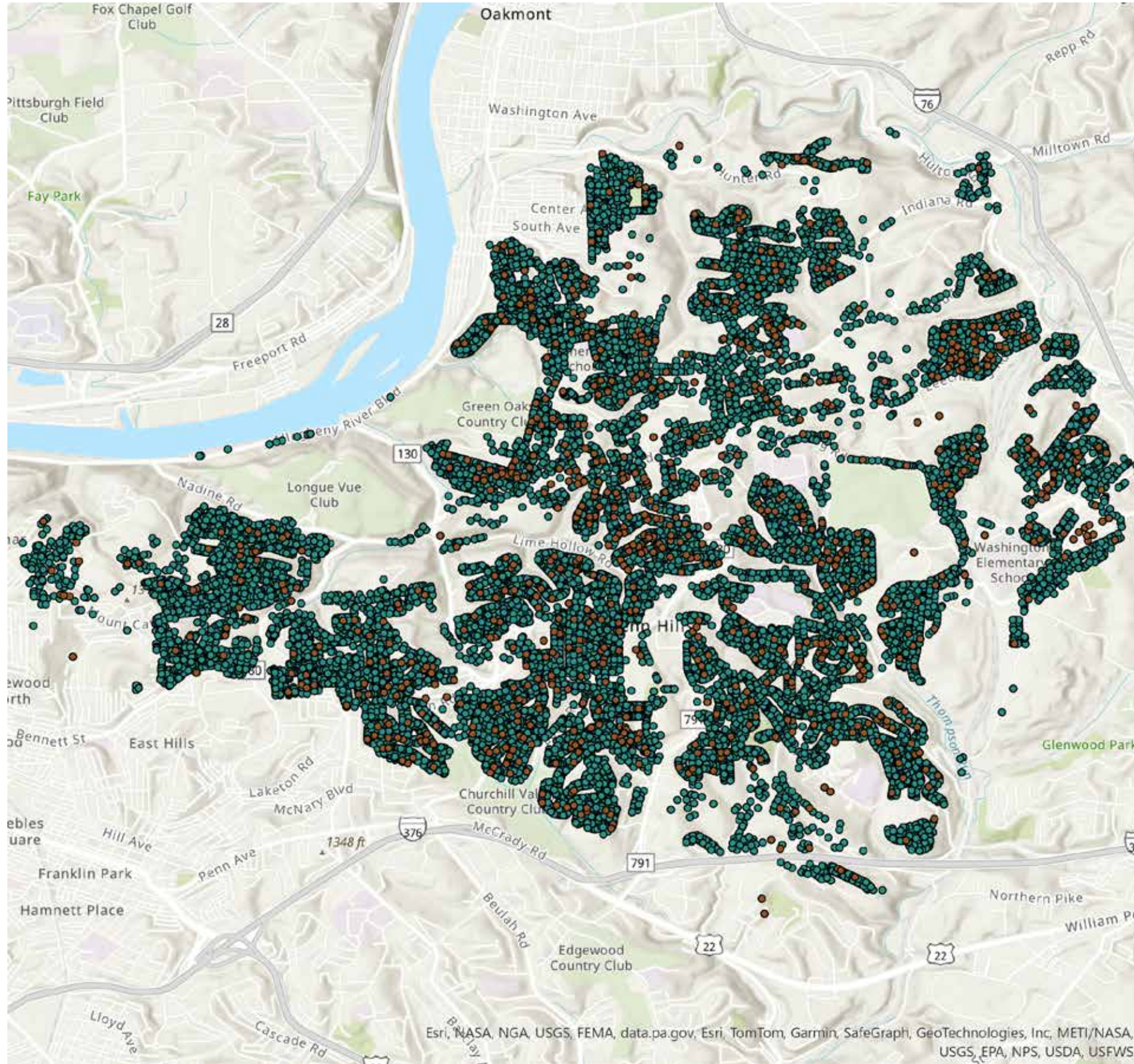
 residents who indicated interest in volunteering for block watches or civic groups

Community Census Completions



residences who completed the Penn Hills Rising Community Census

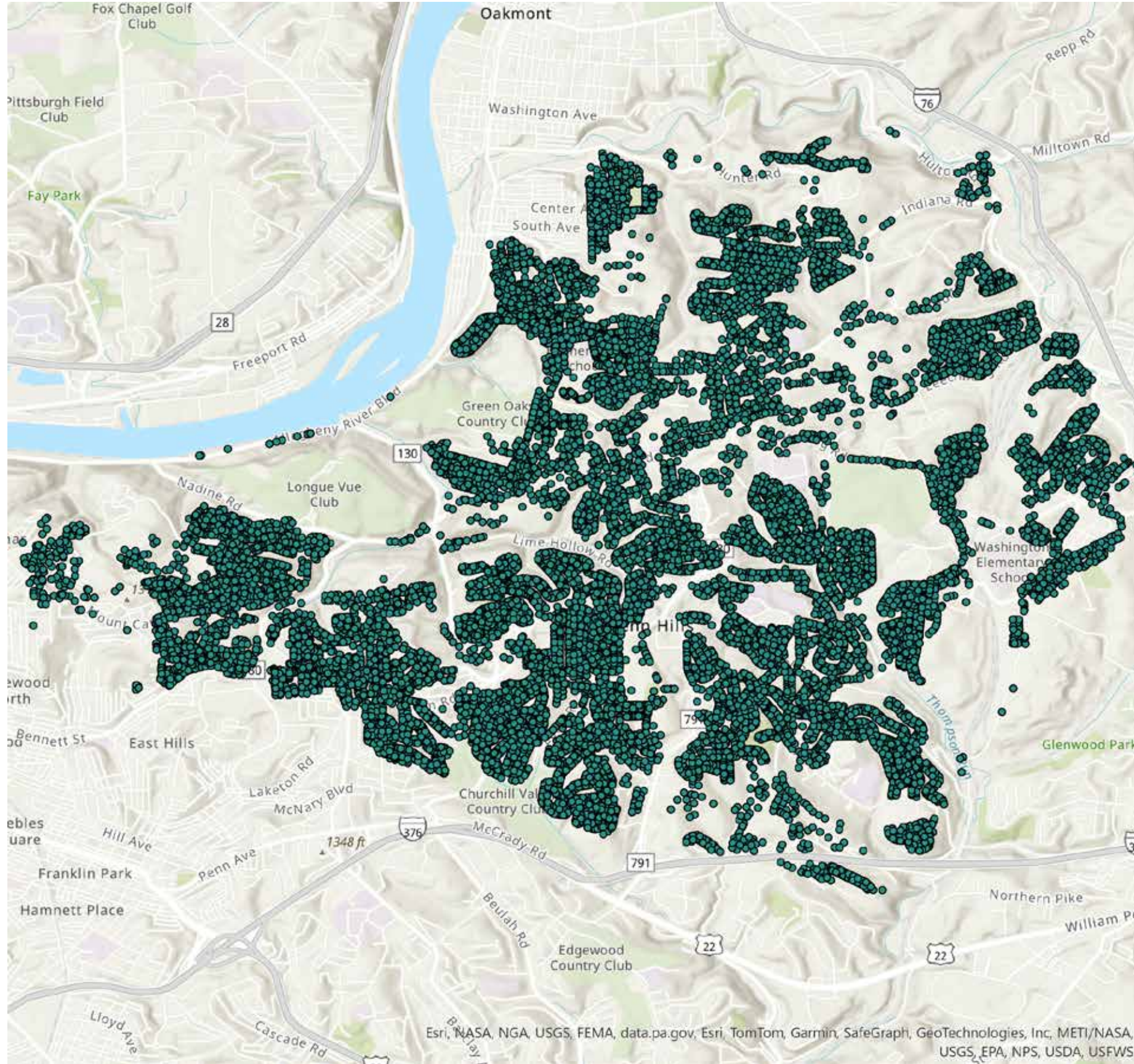
Literature Drops & Completions



residences who completed the Penn Hills Rising Community Census

residences who received information about the Penn Hills Rising Community Census during door-to-door outreach

Literature Drops



residences who received information about the Penn Hills Rising Community Census during door-to-door outreach

